

City Clerk

Schedule "A"

**REFERENCE PLAN TO ACCOMPANY CITY OF KELOWNA
ROAD CLOSURE AND REMOVAL OF HIGHWAY DEDICATION
BY-LAW #9508 OF PART OF KENSINGTON DRIVE SHOWN
DEDICATED ON PLAN 27559 DISTRICT LOT 167 O.D.Y.D.**

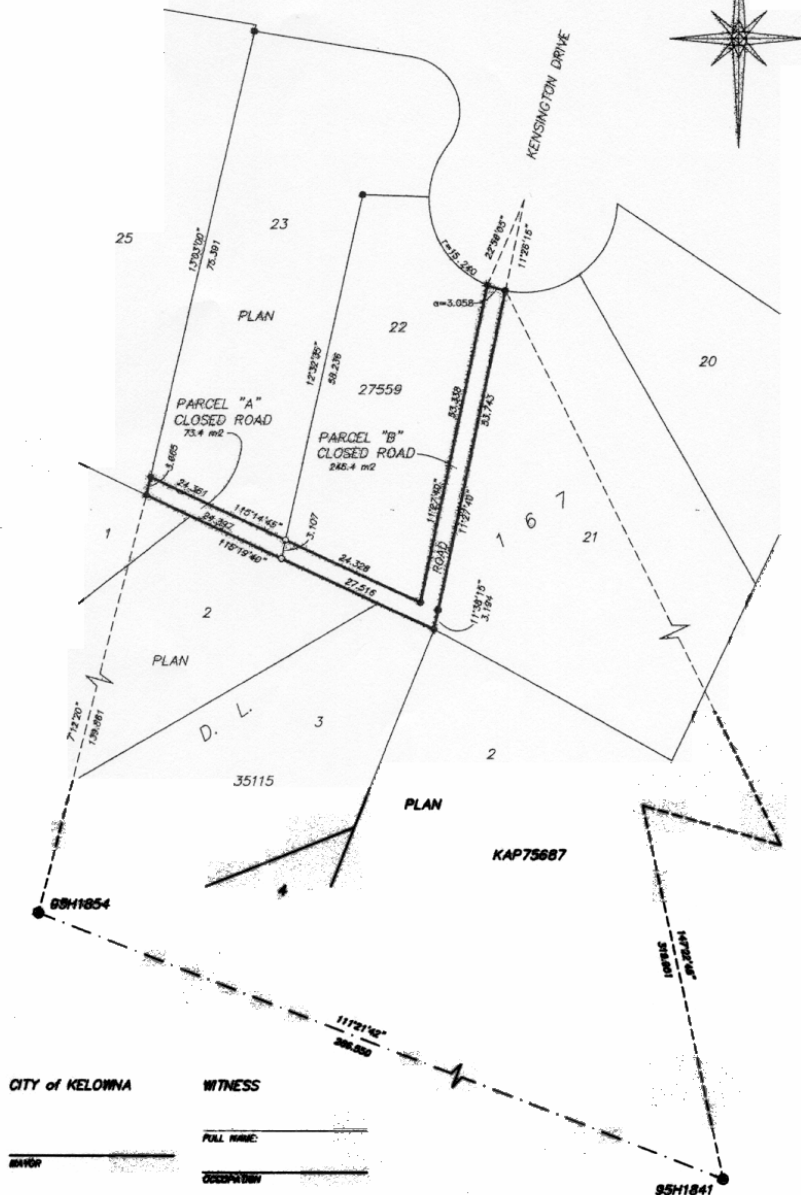
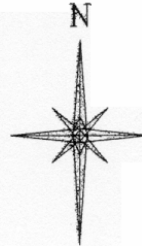
PLAN No. KAP

Deposited in the Land Title Office at Kelowna, B.C.
this day of , 20 .

PURSUANT TO SECTION 120 OF THE LAND TITLE ACT AND SECTION 40 OF THE COMMUNITY CHARTER.

Registrar

SCALE 1:500 BCGS 82E.083
10 5 0 10 20 30 40 50 METRES



This plan fits within the Central Okanagan
Regional District.

LEGEND

All distances are in metres.

- Iron Post Found
- Iron Post Set
- Control Monument Found

Old bearings are checked from observations between
control monuments 8591841 and 8591854.
Integrated survey area No. 4 - City of Kelowna.

This plan shows ground-level measured distances.
Prior to computation of U.T.M. coordinates
multiply by combined factor 0.9999409.

I, Douglas A. Gaddard a British Columbia Land
Surveyor, of the City of Kelowna in British
Columbia, certify that I was present at and
personally supervised the survey represented
by this plan, and that the survey and plan are
correct. The field survey was completed on the 26th
day of September, 2000. The plan was completed
and checked and the checklist filed under 838141
on the 4th day of October, 2000.

[Signature]
D.A.G.

FILE 13264 FR 200

D.A. Gaddard Land Surveying Inc.

103-1308 ST. PAUL STREET KELOWNA PHONE 763-3733

ORIGINAL

CITY OF KELOWNA

WITNESS

BY: _____

FULL NAME: _____

DATE: _____

OCCUPATION: _____

ADDRESS: _____